



CLOSEST TO HEAVEN



Influenced by the Asian philosophy and five traditional Chinese elements, Steve Leung employs the two classic elements water and wood into his design.

The spectacular spiraling skyscrapers twist and turn as they extend into the sky, soaring between heaven and earth like a fearless dragon. Situated between Kuala Lumpur City Centre and the bustling Golden Triangle neighbourhood, are the world’s tallest twisted twin residential towers – 8 Conlay. Scheduled to open by the end of 2020, there is no doubt that 8 Conlay will appeal to overseas buyers.

8 Conlay, the new Kuala Lumpur landmark, is an integrated development consisting of three towers atop a four-storey lifestyle retail podium, featuring the first and only five-star Kempinski



The building itself is designed by architect Hud Bakar (of RSP Architects) with landscapes by designer Pok Kobkongsanti (of TROP Studio). As for the branded serviced residences, YOO8 serviced by Kempinski (YOO8 Tower A and YOO8 B), the interior designs are done by two visionary design talents respectively – the award-winning Hong Kong-based architect Steve Leung and British celebrity interior designer Kelly Hoppen.

“When we created the design concept for YOO8 Tower A residences, we wanted to contribute a feeling of wellbeing to the environments that these two classic elements affect. We want to achieve an ideal balance between economics and aesthetics, to bring space to life and to create space for life.”

Hong Kong architect — Steve Leung

Designed by two world-class top design masters, YOO8 serviced by Kempinski has distinctive styles. Steve Leung designs the 61-storey YOO8 Tower A with 564 residences. Influenced by the Asian philosophy and five traditional Chinese elements, Steve employs the two classic elements water and wood into his design.





Influenced by the Asian philosophy and five traditional Chinese elements, Steve Leung employs the two classic elements water and wood into his design.



“When we created the design concept for YOO8

Tower A residences, we wanted to contribute a feeling of wellbeing to the environments that these two classic elements affect,” said Steve Leung. In fact, his ideology is evidenced in azure



Another important aspect considered by Steve is the use of space. In order to maximize the flexibility of space, most of the residences contain open or semi-open kitchens and open-plan living-rooms. The combination of interactive living and dining room areas ensures that every inch of space is utilised.

On the other hand, Kelly Hoppen designs the 56-storey YOO8 Tower B with 498 residences. As a globally renowned interior designer, Kelly has designed homes for many high-profile celebrities and was honoured with a Most Excellent Order of the British Empire (MBE) by Queen Elizabeth II in 2009.

“By adding the Urban and Spring concepts, the residents are immediately welcomed into an environment reminiscent of home that is always worth treasuring.”

British celebrity interior designer — Kelly Hoppen

Designed by Kelly Hoppen, YOO8 Tower B is defined by two main design concepts: Urban and Spring. As a female, Kelly seamlessly combined a sophisticated ambience with designsavvy urbanities in the city, cleverly curated the Urban concept space with her classic style.

Incorporating signature linear muted tones and repeated motifs in design, the space appeals to the inner cosmopolitan and timeless elegance at the same time. Regarding the Spring concept, Kelly brings harmony and a calm ambience by making best use of soft warm schemes in lighting, neutral materials and organic textures.





When designing the YOO8 Tower B, Kelly Hoppen seamlessly combined a sophisticated ambience with design-savvy urbanities in the city.



Kelly has designed homes for many high-profile celebrities and was honoured with a Most Excellent Order of the British Empire (MBE) by Queen



“It is my very honour to share my design philosophy for the 8 Conlay project,” said Kelly Hoppen. “By adding the Urban and Spring concepts, the residents are immediately welcomed into an environment reminiscent of home that is always worth treasuring.”

Overlooking the astonishing skyline of Kuala Lumpur from YOO8 serviced by Kempinski, you see yourself walking through the clouds where mists and fogs surround this enchanted forest of mystery island.

8 Conlay

www.8conlay.com

Vol.11



YOU MAY ALSO LIKE



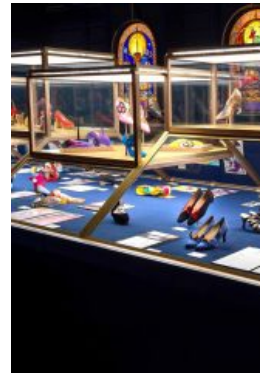
LIFESTYLE, SPOT LIGHT

BRING THE NATURE INSIDE



LIFESTYLE

MY ÉGÉRIE, MY MUSE



ART EVENT,

THE IDEN

